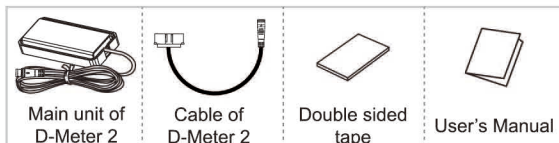


CONTENTS

The following pictures may be different from reality, they are just only for the reference.



- Please attach the user's manual to the product when transferring to others.

FEATURES

- It has seven-color atmosphere lights and four-stage adjustable brightness. The lights change according to vehicle conditions. Make your driving experience full of senses.
- The power-off memory function only needs to be set at the first use, and then automatically memorizes the last use mode.
- Nine kinds of information warning values can be set according to user needs.
- Adopt OLED display. The driver can view the values while driving without the interference of light.
- Set the display interface by yourself. It can display two kinds of information at the same time.
- Left and right driving modes can be switched to suit each user's operating habits.
- Units can be adjusted according to user habits. (Example: Bar/PSI, °C/°F)
- The red light will flash and an audible sound will alert the driver when the warning value is reached.
- Simple hidden button design, users can intuitively operate the product.
- Monitor 10 kinds of vehicle information, including turbo, air-fuel ratio, gearbox, speed, mileage, etc.

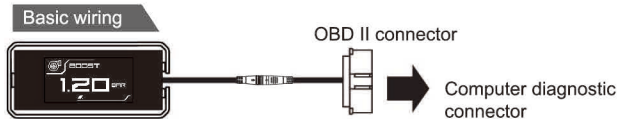
IMPORTANT

WARNING! Do NOT pull the wire for safety.

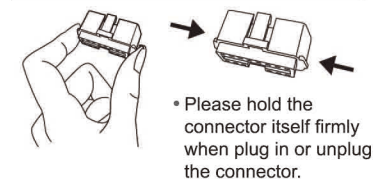


- Please read the instruction manual carefully before installing the D-Meter 2.
- Please perform the initial setup during the first installation.
- Operating this product while driving may cause a car accident happened due to distracted driving. Please make sure to drive safely and use it with care.
- If there is any installation problem or unfamiliar situation, please entrust professional store to install.
- After installation, do not apply excessive force to the product. Items fixed and pasted with double-sided tape are easy to fall off when they are just installed, please be careful.
- Double-sided tape is very strong. If you need to reposition it, please carefully peel it off to avoid damaging the device.
- Do not modify, disassemble, or alter this product without permission.

INSTALLATION INSTRUCTION



Notes of installation OBDII connector



Attention! Please make sure not to hold the cable when unplugging the connector which might break or crack from the cable.

Power Connecting

Please fasten the product and wire well, if they are fallen off is very dangerous during driving.

[Initial Installation Process]

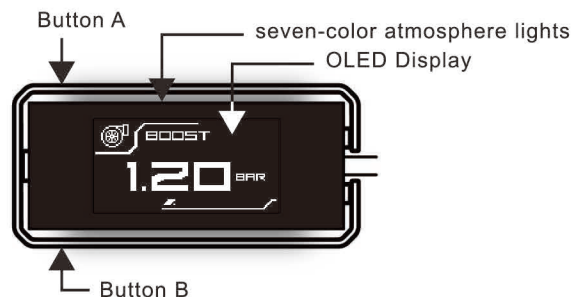
- Insert OBD2 while the engine is off; the D-Meter2 screen will light up.
- Only start the engine after the screen has turned off.

*If D-Meter2 has been installed in the vehicle, the system will save the vehicle settings. When OBD2 is changed to another vehicle, a reset is required.

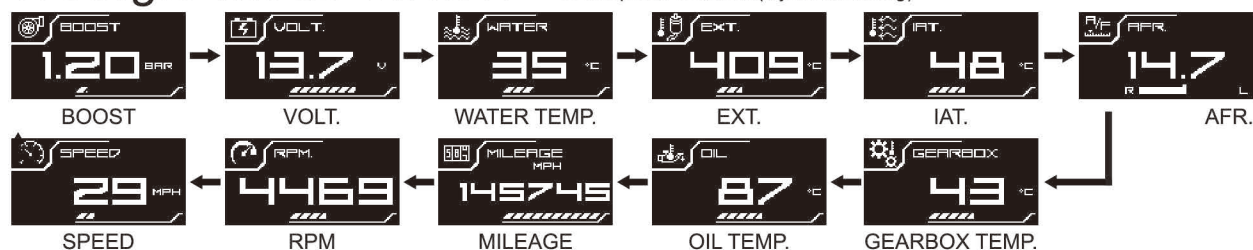
*If you do not follow the first installation process, some vehicles may display incomplete information. Even the canbus signal is interrupted and causes shutdown.

OPERATION INSTRUCTION

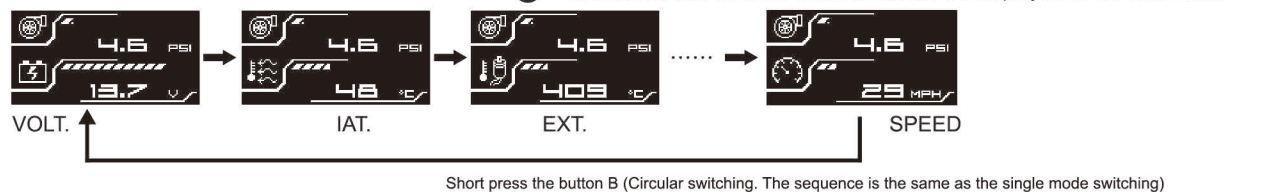
The buttons are inside the product, so you can choose two fixing methods during installation.
 1. Apply the double-sided tape directly to the back of the product and then it can be operated through the aluminum frame.
 2. Paste the double-sided tape under the metal frame. After finish pasting, you can use the plastic body to operate the product.



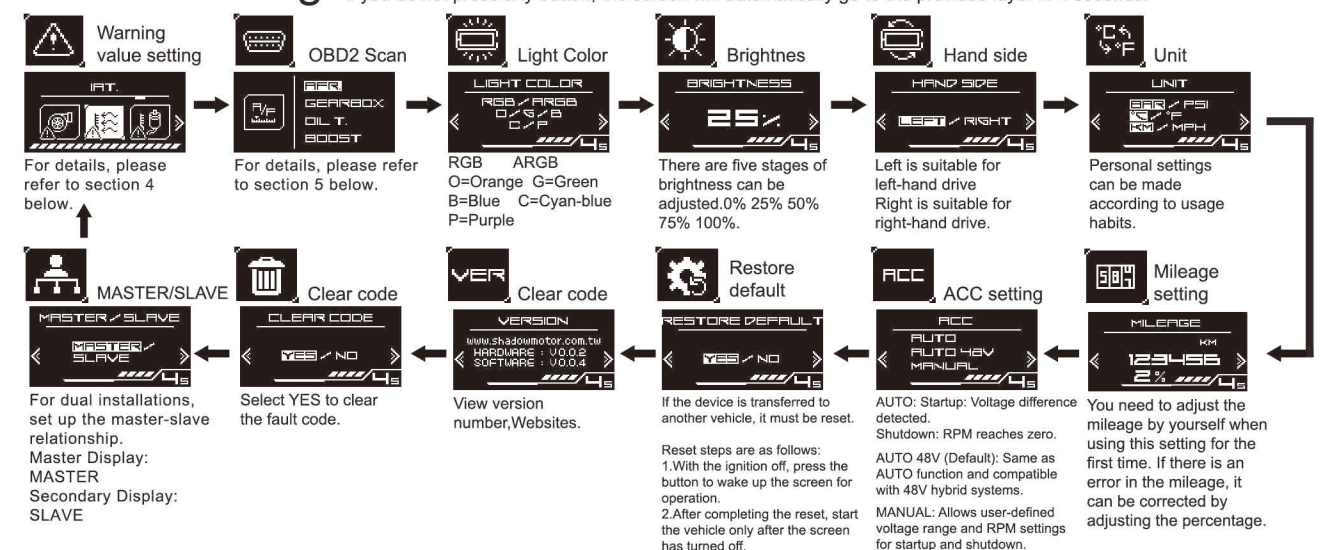
1. Single mode switch



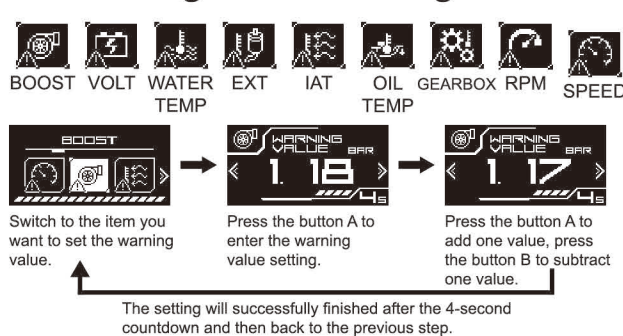
2. Dual mode switching



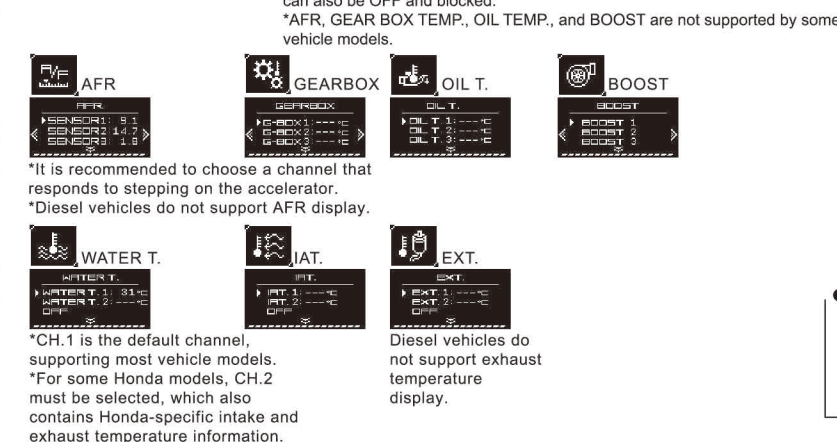
3. Basic setting



4. Warning value setting



5. OBD2 Scan



PRODUCT SETTING CORRESPONDENCE LIST

	Default alert value	Default alert value	Setting range	Setting range	Default unit
BOOST	1.0bar	17.4psi	-1~1.5bar	0~21psi	Bar
VOLT.	11.0V	11.0V	8~18V		V
WATER TEMP.	110°C	230°F	0~150°C	32~300°F	°C
EXT.	900°C	1500°F	500~1300°C	900~2400°F	°C
OIL TEMP.	110°C	230°F	0~150°C	32~300°F	°C
IAT.	60°C	140°F	0~100°C	32~210°F	°C
AFR					AF
GEARBOX	105°C	221°F	0~150°C	32~300°F	°C
MILEAGE					KM
RPM	6000RPM	6000RPM	800~10000RPM	800~10000RPM	RPM
SPEED	160KM	100MPH	30~250KM	20~155MPH	KM

Troubleshooting

When you think the machine is faulty, please confirm the following items before sending it for repair:

Problems	WHY	Confirm items
No action is shown after the power is turned on.	1. Poor contact with the OBD II connector. 1. The vehicle lacks CANBUS signal.	1. Please ensure that the OBD2 plug is securely connected. 2. Check if the vehicle's year and model support OBD2 reading.
After the power is turned on, "-" appear on the screen.	The value cannot be displayed. It may be that the PIDs are not supported in the original factory settings, so the OBD2 display value cannot be displayed.	"-" indicates that the original vehicle's ECU does not provide that data display.
The lights of other modes keep flashing during use.	The warning function of other modes is activated.	1. Switch to the mode corresponding to the flashing light, and check for any abnormal data. 2. Increase the warning value or set it to the maximum to disable the warning.
After the engine is turned off, the product is not turned off at the same time.	This is because the ECU shuts down and stops sending signals after the engine has been turned off for a period of time.	1. AUTO mode toggles power based on ECU signals. 2. Manual power toggle can also be configured in "Basic Settings".
After the engine is started, the product is not turned on at the same time.	This is because the ECU will start sending signals after the engine has been started for a period of time.	This is normal, please don't worry.
The AFR signal is incorrect or cannot be read.	The value cannot be displayed or the value is incorrect. It may be that the PIDs are not supported in the original factory settings, so the OBD2 display value cannot be displayed.	The sensor can be selected by setting the AFR signal source to ensure that the correct information can be read. If the information is still incorrect, it means that the product does not support the signal of the car.
Warning mode flashing occurs at normal values.	It may be that the warning value is set too low, so the warning mode comes out early.	Please check the alert threshold settings.
Some values (turbo, exhaust temperature) cannot be displayed.	After OBD2 is standardized, each Parameter IDs (PIDs) has a corresponding position. The value cannot be displayed may be that the PIDs and components are not used in the original factory setting, so the value of the OBD2 display cannot be displayed.	Check if the PIDs and components are used in the factory default settings.
Product speed does not match the speed on the car.	The data is sourced from the ECU, providing unaltered raw data from the vehicle.	According to the "Vehicle Safety Inspection Standards Act," the speed displayed on the dashboard of factory vehicles generally tends to be slightly faster than the actual value.

When the product needs to be repaired, please collect the product body and accessories and return them to the original place of purchase.